



Blaine County
Fiscal Year
2023 Budget

Prepared by:
Blaine County Administrator's Office
April 21, 2022

FY23 Budget Coversheet

General Information

Office/Department: Blaine County Noxious Weeds

Budget Contact Person: John Cenarrusa

Budget Team Members: Kay Draper

BCC Presentation Date: June 15th, 2022

Office/Department Profile

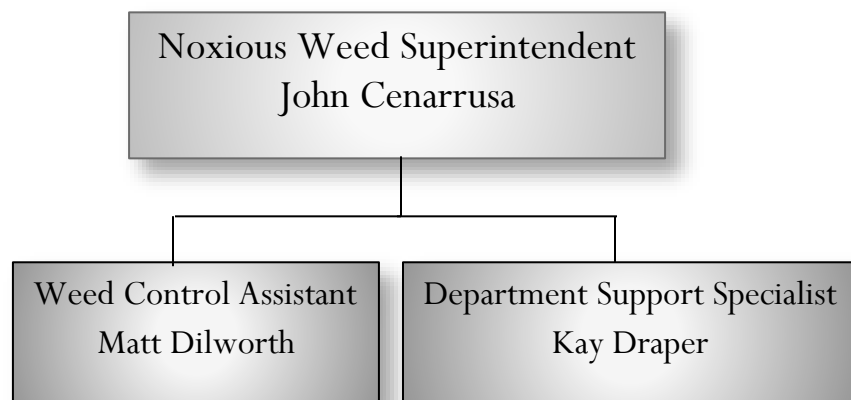
Operational Description

Blaine County Weed Control protects Blaine County and its citizens from the harmful impacts of Noxious Weeds and their spread. It treats Noxious Weeds and other weed species using Integrated Pest Management (IPM). The weed department is responsible for the enforcement and compliance of Idaho State Weed Law. We inform the public about Noxious Weed issues and the latest weed control measures. We also treat Blaine County properties and rights of way for Noxious and non-noxious weed species to meet Vegetation Management Rules for safety and erosion control.

Department Mission

To protect Blaine County and its property owners from the harmful impacts of Noxious Weeds.

Organizational Structure



FY22 Fiscal Year Review

FY22 Performance Metrics

(Provide a bulleted list of at least 3 performance metrics - Note – going forward these should be reported on year-over-year)

- Appoxmitly 3000 acres owned or managed by Blaine County will be sprayed from April to October. This land includes County Right-of-Ways, Gravel Pits, Waste Areas, County Facilities, and County Fair Grounds. Applications are based on environmental conditions which limit application days.
- Currently, we attend three events during the spring and summer months: Earth Day, Bike To Work Day, and The County Fair. The focus of all of the events is to educate attendees about Noxious Weeds.
- Last year's communication with property owners:
 - Sent out 75 spring-friendly reminder letters and 55 enforcement letters. Our friendly reminder letters go out to property owners that received an enforcement letter from previous years—reminding them that most noxious weeds have to be treated year after year. The enforcement letter makes property owners aware that one or more noxious weeds have been identified on their property and states Idaho Noxious Weed Law, Title 22, Chapter 24, Idaho Code. In FY22.
 - Sent over 100 informational letters to property owners about Yew Plants and the Blaine County Ordinance 2016-01. We also sent 90 emails to property owners, landscape companies, and property management companies about the Yew Plants in the Wood River Valley, Jerome, and Twin Falls.
 - Each week, complete 15 to 20 one-on-one conversations with property owners helping them with weed identification and control issues.
 - Public Notice in the Mt. Express of State Noxious Weed List. The Weekly paper education on Bio-Control. Individual newspaper ads about Yew Plant Ordinance and Education.

FY22 Fiscal Year Highlights

(Provide a bulleted list of three to five highlights from FY22 – should tie directly to budget requests and approvals from current FY and how the budget approvals helped your department achieve your metrics)

- Community partnerships through Blaine County CWMA increased this year. The CWMA, led by Blaine County Staff, was successfully awarded funding from The Department of Agriculture Cost Share Program. The funding supported eight spray days and The Southern Idaho Bug Crew.

- Through our CWMA funding, we will expand our spray days into larger areas.
- Our "Report A Weed" link on our webpage continues to be used by Blaine County staff and the public. Summer of 2021, we identified 56 noxious weeds via this link.
- We continue to support Bio-control in our valley. We continue to work with the Southern Idaho Bug Crew and the Nez Perce Bio-Control Center.

FY22 Other Highlights

(Provide any other highlights and updates from FY22)

- In FY21, we started to map the areas we sprayed with herbicide during our CWMA spray days. In FY22, we will continue these efforts to map our herbicide-treated areas, Bio-Control treated areas, and the ERC Weed Warrior Program.
- We continue to see the reduction of Noxious Weeds in Blaine County. Particularly Spotted and Diffused Knapweed.

FY23 Fiscal Year Budget Request Highlights

Requested Resources and Associated Costs

(Identify any significant budget requests and applicable information to support the requests. Explain how the requests will support increased performance of the above identified performance metrics.)

- People
 - N/A
- Facilities
 - N/A
- Furniture
 - N/A
- Equipment
 - UTV Trailer
 - \$25,0000
 - Our current trailer cannot haul two UTVs. We request an enclosed trailer to haul two UTVs and allow storage for this equipment in the winter months used. This will open more space in the shop for other equipment and workspace to complete repairs during downtime.

- UTV Gator
- \$18,000
- We only have one UTV that holds 45 gallons of spray. We use ATVs which hold 15 gallons of spray. By adding a UTV, our productivity will increase significantly. More area can be covered and less time spent missing and loading chemicals. A UTV can cover 13 acres in one load of chemical spray. In contrast, an ATV will cover up to 1.5 acres per load.
- Vehicles
 - N/A
- Other (describe)
 - N/A

NOTE: Phones, computers, etc. – IT will include this in their budget – please be sure to coordinate with IT for any new FTE requests.

FY23 Fiscal Year Anticipated Highlights

FY23 Anticipated Projects, Performance and Highlights

(Provide a bulleted list of at least 3 anticipated highlights based upon budget requests or anticipated projects.)

- Continue to treat weeds throughout Blaine County. Using Integrated Pest Management (IPM)
 - Chemical Control
 - Bio-Control
 - Culture Methods
 - Mapping
- Continue to expand our CWMA program through collaboration with other group members.
 - Using Chemical Control
 - Bio-Control
 - Culture Methods
 - Mapping
- Continue to educate the public about our Yew Ordinance and continue our work with Idaho Fish And Game to help limit the loss of wildlife in our valley.
 - Using Chemical Control
 - Bio-Control
 - Culture Methods
 - Mapping

